



JAMESTOWN COMMUNITY MEETING

JUNE 16, 2015

CDPHE Natural Disaster Grant Program

- EPA Report issued March 31, 2014 - Summarized Short and Long Term Recommendations
- The Town submitted a Natural Disaster Grant to the CDPHE through the Water Quality Control Division for Items recommended in the EPA Report
- The CDPHE Grant Application was Accepted and Funded July 2, 2015
- Grant finding is \$1,000,000 with no matching funds
- AmecFW was Retained by Jamestown to Complete the Tasks Outlined in the Approved Grant on April 13, 2015

CDPHE Natural Disaster Grant Program

Project Primary Activities Include:

1. WTP External Power Connection and Purchase a Generator
2. Flood Proofing on the WTP Main Door
3. UPS for WTP Controls, Alarms and Communications
4. WTP Alarm and System Improvements
5. **Develop a Redundant Water Source Using Well(s)**
6. Automatic Pipe Valve for Pipe Break Protection
7. Flow Meters and Rate Flow Controllers on Filter Effluent Pipes
8. Replace Water Service Lines to Residential Homes
9. Closed Loop Geothermal Heating System

Develop a Redundant Water Supply - Approach

Phase 1 Includes Drilling and Testing to Prove Source

Test Well Drill Locations

Considerations:

- i. Town Owned Property**
- ii. 100-Year Flood Plain**
- iii. Proximity to Water System and Power Source**
- iv. Geologic Conditions**

Construction

Services Include:

- i. Drillers**
- ii. Pump Installers**
- iii. Water Quality Testing**

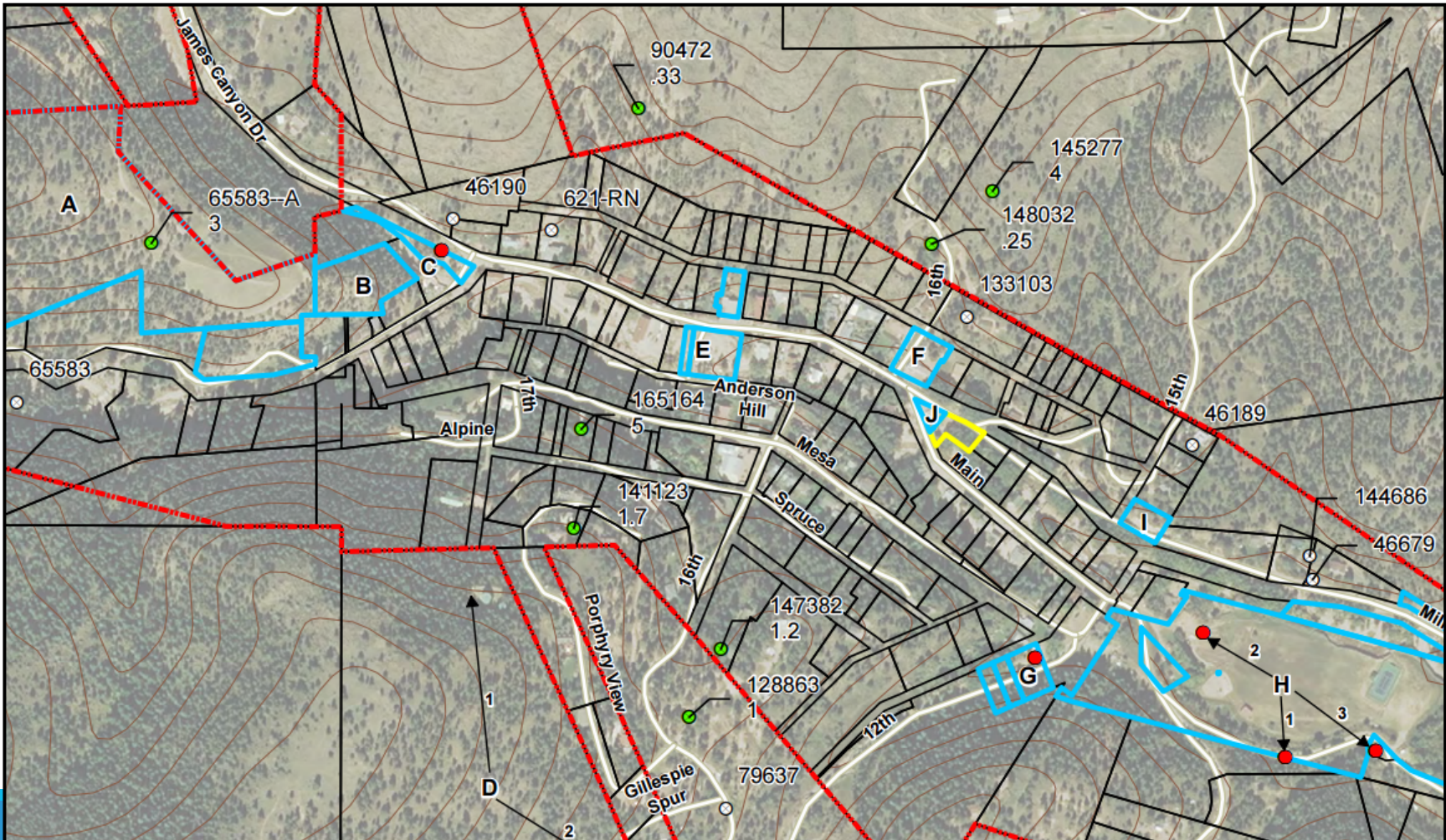


Develop a Redundant Water Supply - Approach

Map Location	A	B	C	D1	D2	E	F	G	H1	H2	H3	I	J
JT Owned	1	1	1	3	3	1	1	2	2	1	1	2	1
Access	2	3	1	2	2	1	3	2	1	1	1	3	1
100 Yr Flood	1	1	1	1	1	3	1	1	1	1	1	1	3
Power	3	2	1	2	1	1	2	1	1	1	1	1	1
Water	3	3	1	1	3	1	2	2	1	1	3	3	1
Geology	1	3	1	3	1	2	2	2	2	3	2	1	2
Total Points	11	13	6	12	11	9	11	10	8	8	9	11	9
Geology Ranked	1	13	3	12	2	8	10	7	5	11	6	4	9
Top Ranked			1					5	2	3	4		

Last updated 6/8/2015

Develop a Redundant Water Supply - Approach



Develop a Redundant Water Supply - Approach



- Typical Drill Rig and Support Vehicles. (Cpt. Jack)

Develop a Redundant Water Supply - Schedule

Project Schedule Summary

[illegible]

Develop a Redundant Water Supply - Schedule

- Phase 2 Components:
 - Well Head Chlorination (Pump House)
 - Plumb Treated Water To Town Water Distribution System
 - Pump Controls
 - Electrical Connections and Controls
 - Start-up

Questions?

James Canyon In Jamestown Permanent Repairs Preliminary Design



Permanent Repair Project

Boulder County Transportation Department is managing the project for Jamestown

James Canyon Project is from Lefthand Canyon to milepost 4.9

Jamestown's portion of the project includes Mill Street / Main Street / Overland Road inside Town limits



James Canyon Project Schedule

	2015							2016											
	J	J	A	S	O	N	D	J	F	M	A	M	J	J	A	S	O	N	D
Preliminary Design	■																		
Final Design		■	■	■	■	■	■												
County Public Meeting			■																
Advertisement								■											
Bid Opening								■											
Construction										■	■	■	■	■	■	■	■	■	



Permanent Repairs

In damaged areas:

- Replace road base and temporary asphalt pavement

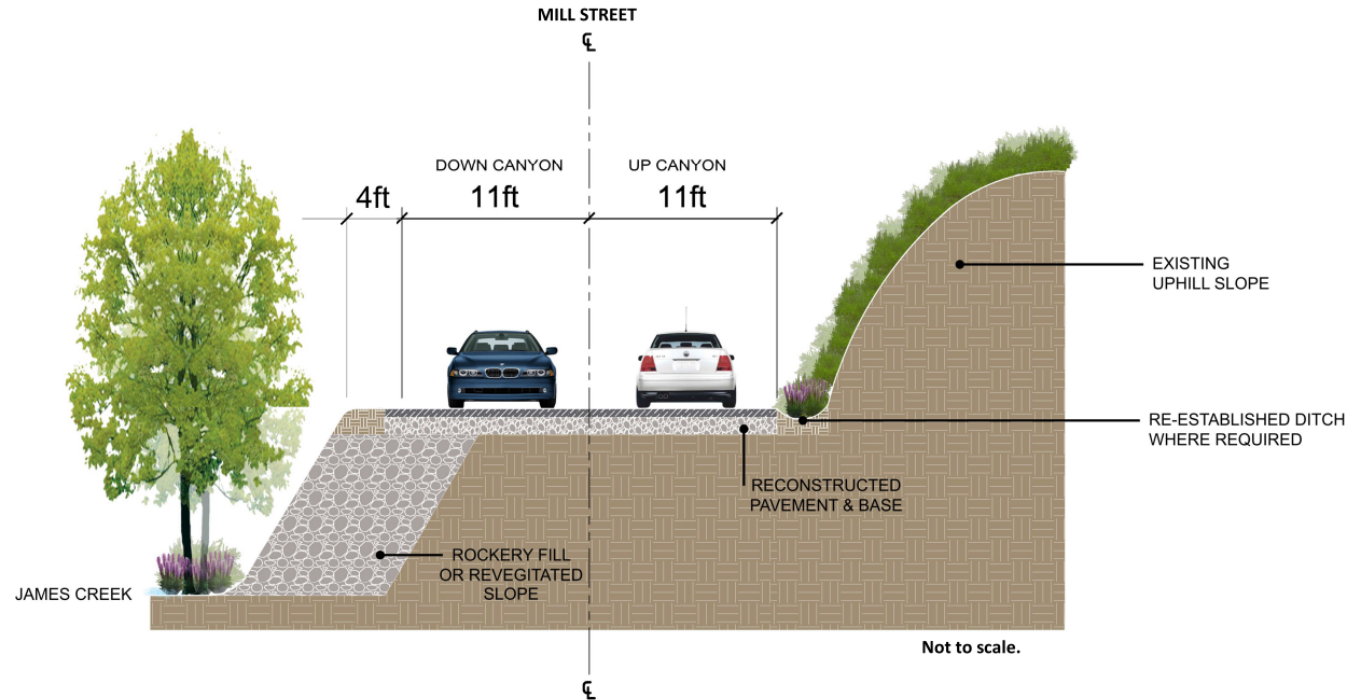
Where needed:

- Rockery fill
- Culvert replacements
- Retaining wall



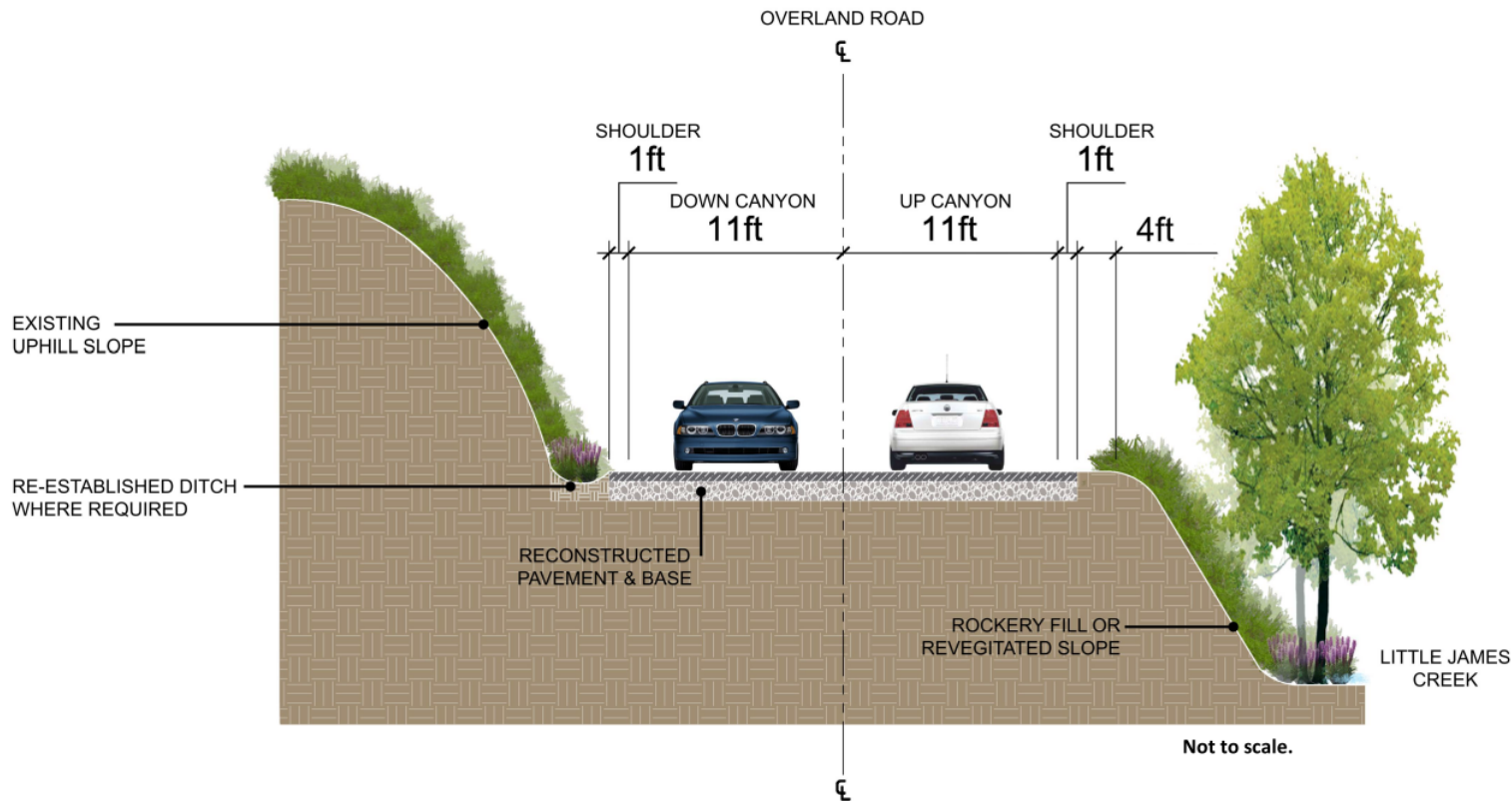
Typical Road Sections

Mill Street Repair Areas



Typical Road Sections



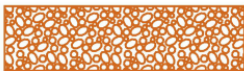





Overland Rd from Jamestown to Balarat Rd Repair Areas



Rockery Fill

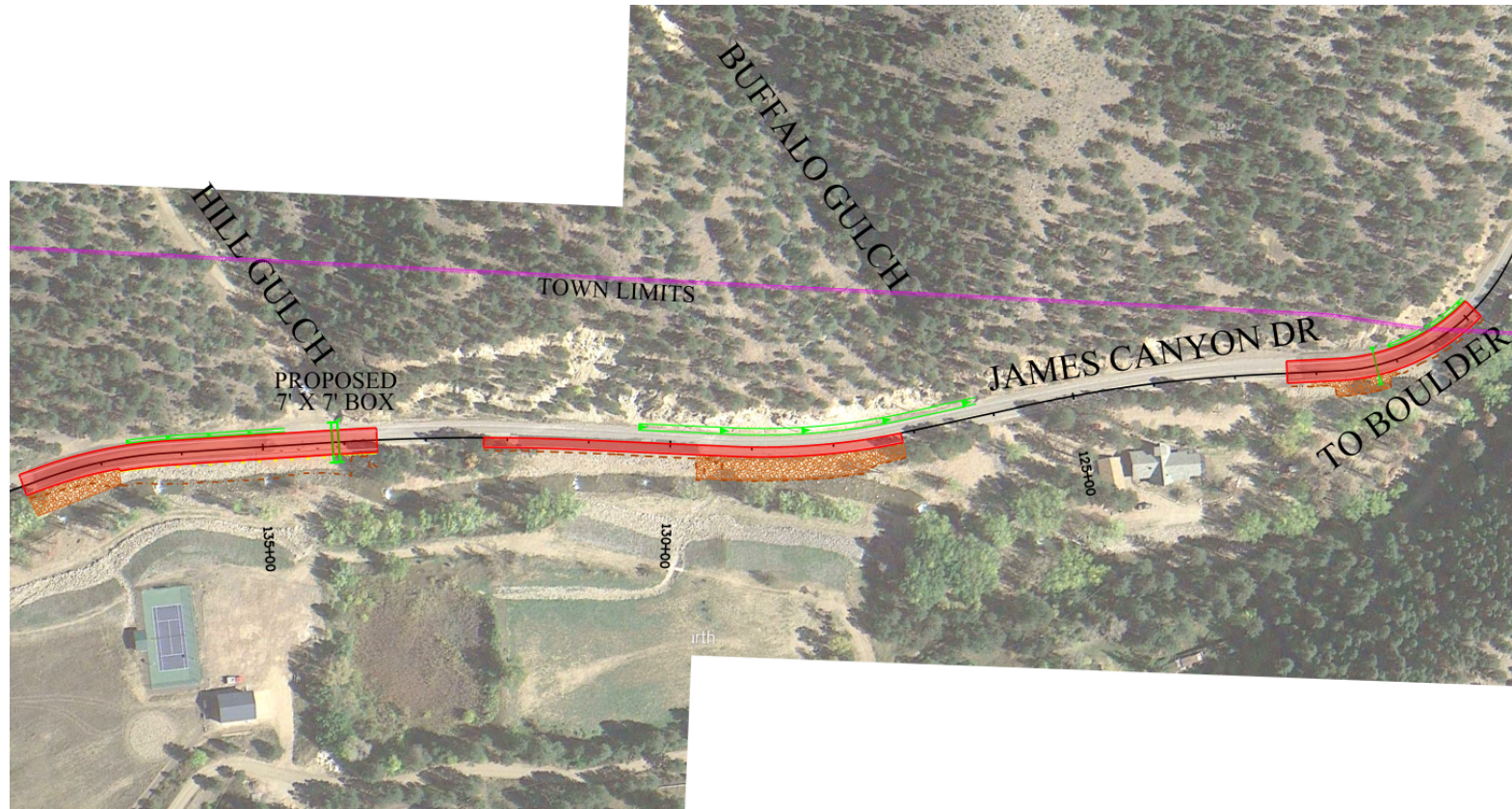


Proposed Repair Features

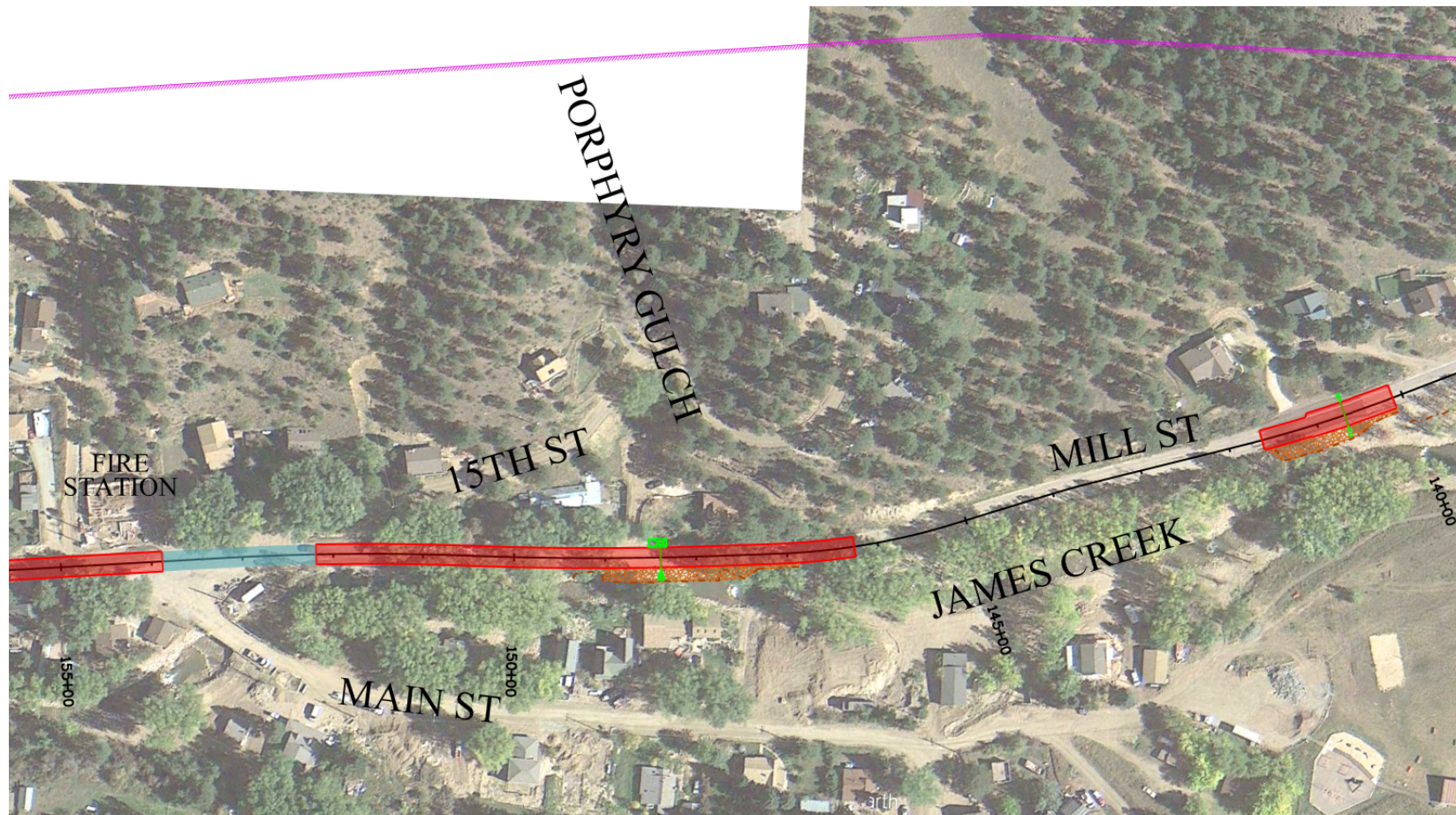
-  PAVEMENT REPAIR
(REPLACE BASE COURSE AND ASPHALT)
-  POTENTIAL ASPHALT OVERLAY
(FUNDING ELIGIBILITY T.B.D.)
-  ROCKERY FILL
-  TOE OF FILL
-  ASPHALT-LINED DITCH
-  PIPE CULVERT
-  METAL GUARDRAIL
-  RETAINING WALL



Jamestown East End



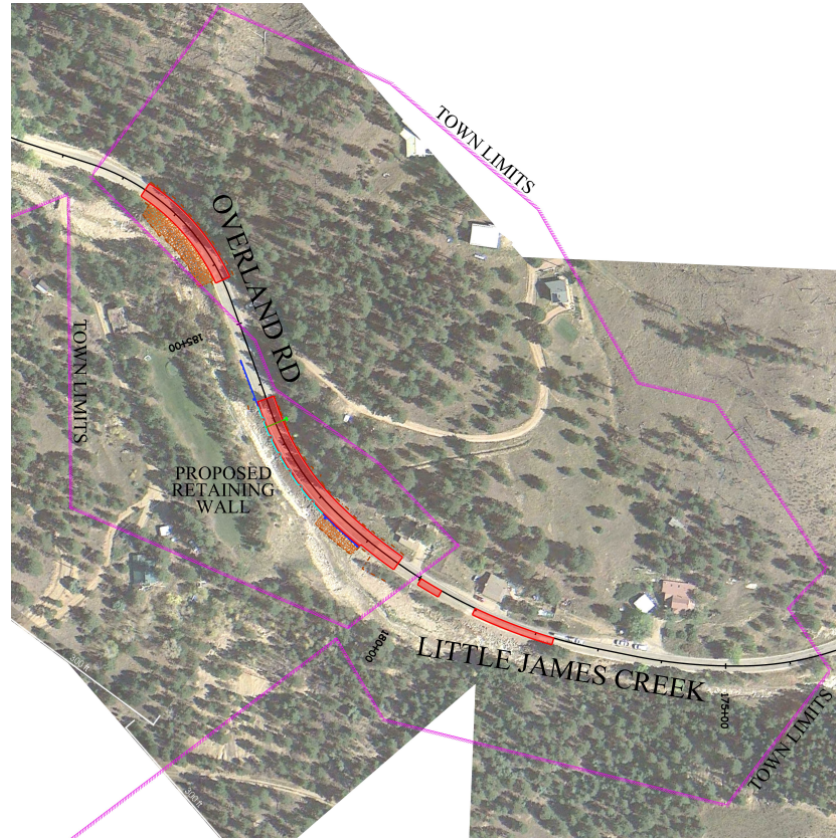
Mill Street



Main Street



Overland Road Retaining Wall



Little James Creek Crossing



Little James Creek Crossing



Next Steps

- Begin final design and environmental clearances
- Update FEMA project worksheet to include all completed temporary repairs and planned permanent repairs
- Boulder County Public Meeting in mid-August to present entire James Canyon design

Questions?

